



EXPOSE

ALUMINIUM GLAZED
FULL VISION SECTIONAL
OVERHEAD DOORS

EXPOSE
YOUR PRIDE



ALUMINIUM GLAZED FULL VISION SECTIONAL OVERHEAD DOORS

In this type of door the whole surface is constructed from Full Vision panels. The advantage of using transparent fillings is more natural light in the building and a clear view inside and out. The Full Vision door gives each building a luxurious appearance.

Full vision panels are aluminum hollow profiles with vertical center posts and a filling of your choice. The fillings are clamped to the inside with a white frame that consists of polythene and rubber. Full Vision panels can also be combined with insulated sandwich panels. It is also possible to fit these panels with no filling at all.



Improve natural light inlet and aesthetics without compromising stability with attractive, glazed overhead sectional industrial doors.

Glazed overhead sectional doors are an industrial door with a difference; visually appealing and highly practical the glazed sections improve natural light inlet and visibility.

The natural choice where product demonstration is a priority, the glazing arrangement benefits from the added stability of a 40mm thick aluminium tubular frame, which makes Glazed doors a practical door system for entrances where industrial and/or commercial traffic must pass. Windows arranged in a 'grid' formation can be complemented by insulated solid panels to further enhance stability. Although all rows can be glazed, the most common arrangement of the Glazed doors sees the bottom row 'infilled', making it both easier to clean and more resistant to scratches and general wear and tear Glazing arrangement.



EXPOSE Aluminium Full vision Sectional Overhead doors are ideal for commercial & residential buildings requiring visibility, access to natural lighting and modern look. They're the perfect choice for everything from Villas and Apartments to Service stations and car dealers.

These overhead doors are available with Aluminum frame construction, providing options that ensure maximum durability and reliability. Customize your door with a wide variety of window, colour, design and performance options.

- There are 2 kinds of these product such as:
- a) Residential Full Vision Garage Door
 - b) Industrial Full Vision Sectional Overhead door

Note: Except for Full vision panels, all the accessories are different for both Residential and Industrial Full vision doors

GLAZED MATERIAL

1. STANDARD COLOUR OPTIONS



CLEAR

BRONZE

DARK BRONZE

GREEN

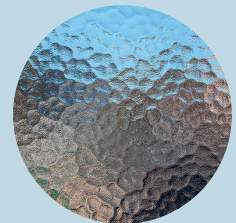
BLUE

Note: Other Colours can be made available upon request. Additional cost and lead time may apply. Online colour swatches are only digital reproductions of actual standards and will vary in appearance due to differences in monitor and video card output

2. STANDARD DESIGN OPTIONS

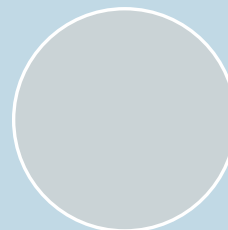
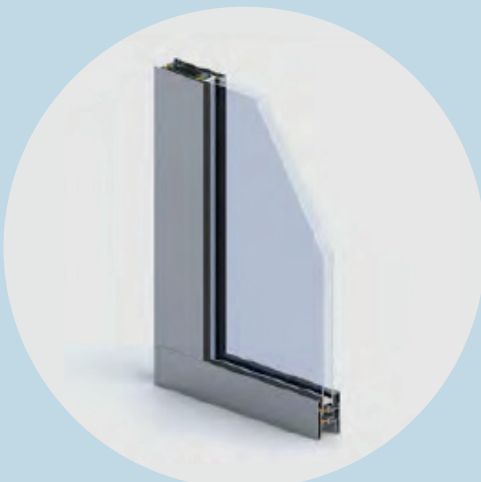


CLEAR



OPAQUE

ALUMINIUM PROFILE



MILL FINISH



NORMAL
RAL COLOURS
OTHER THAN
METALLIC
COLOURS

Note: Other Colours can be made available upon request. Additional cost and lead time may apply. Online colour swatches are only digital reproductions of actual standards and will vary in appearance due to differences in monitor and video card output

HARDWARE

No.	Picture	Product Name	Unit	Qty per set for W6000*H3000 door	Note
1		Adjustable hinge	pcs	10	galvanised steel
2		Middle hinge	pcs	20	galvanised steel
3		Roller	pcs	14	Nylon, 2"
4		Top Bracket	pair	1	galvanised steel, for double track
5		Bottom bracket	pair	1	galvanised steel
6		Vertical track	pair	1	galvanised steel, 2"
7		Horizontal track	pair	1	galvanised steel, 2"
8		Upper track	pair	1	galvanised steel, 2"
9		L-frame	pair	1	galvanised steel
10		Cable	pair	1	steel, Ø2mm
11		Cable drum	pair	1	aluminum, 8"
12		Middle bearing	pc	5	galvanised steel
13		Spring	set	1	spring
14		Angel bar	pcs	8	galvanised steel, 50cm
15		Fasteners	set	1	
16		Bottom seal	m	1	plastic, rubber
17		Top Seal	m	1	EPDM
18		Side seal	m	2	EPDM
19		K-shaft	m	1	
20		Key Shaft	pc	1	
21		Manual handle	set	1	

DOOR OPERATOR

A) RESIDENTIAL FULL VISION GARAGE DOOR

marantec 
drive technology

GARAGE DOOR OPENERS



Safety and comfort
through technology



Garage door openers

Comfort 260, 270, 280, 260 accu

Our classic and most popular opener. Now in its 5th generation and going strong. Systematically refined and featuring the latest technology: LED lights, door-friendly control system, sensitive obstacle detection system, easy to operate.



The right opener for you

Our standard opener

Comfort 260: Comes with everything needed for a standard garage door. For doors with a weight of up to 90 kg.

Designed with width in mind

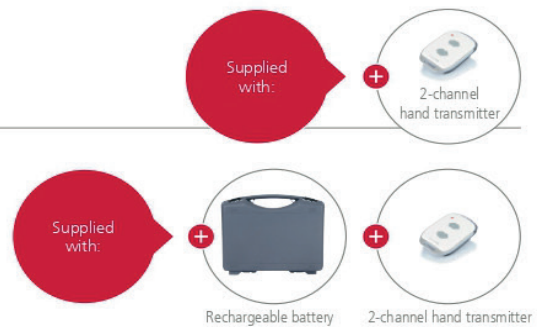
Comfort 270: Designed for wide garage doors or double garages up to 5 m wide. For doors with a weight of up to 165 kg.

The battery powered opener

Comfort 260 accu: This opener can be operated independently of a power supply and can also be connected to a solar panel.

Our strongest classic

Comfort 280: This is the most powerful of our Comfort 200 series openers and is designed for wide double garage doors and large up-and-over doors. For doors with a weight of up to 200 kg.



Comfort 280

Opener systems for garage doors



Garage door openers

Radio accessories bi-linked

Radio accessories Multi-Bit

General accessories

Comfort 280

ARTICLE	ARTICLE NO.	PRICE EACH
Comfort 280	115 327	

PACKAGE
<ul style="list-style-type: none"> · Motor unit with integrated control unit · Digital 921 module receiver, 868 MHz bi-linked · Digital 572 micro hand transmitter 2-channel, 868 MHz bi-linked · Universal mounting kit for up-and-over doors and sectional doors · Power cord with Europlug, 1.500 mm

ELECTRICAL DETAILS	
Nominal voltage	230 V AC
Nominal frequency	50/60 Hz
Power consumption	1.1 A
Power input in operation	0.25 KW
Power input stand-by	approx. 4 W
Operation mode (duty cycle)	S2-2 min
Motor voltage	24 V DC
Control voltage	24 V DC
Protection category	(motor unit) IP 20
Protection class	II

MECHANICAL DETAILS	
Push and pull force	max. 1,000 N
Door travel speed	max. 160 mm/s
Opening time (door-specific)	approx. 14 s

GENERAL DETAILS	
Measurements (WxHxD)	(motor unit) 190x125x360 mm (packing) 245x145x500 mm
Weight (total)	approx. 6.6 kg
Range of temperature	-20 °C to +60 °C
Illuminant	8-LED-module

FUNCTION
<ul style="list-style-type: none"> · Economy mode · Electronic travel cut-out · Soft start/soft stop/soft run · Electronic push-open security · Anti-blocking device · Excess travel stop · Release using pull rope (inside) · Motor head rotatable by +/- 90° · Marantec EOS programming with LC-display · Direction of rotation programmable · Back jump (stress relief of the closing edge) · Automatic closing function (only usable in combination with a photocell) · Door open duration and warning time programmable · Lighting duration programmable and switchable via radio · Automatic cut-out OPEN and CLOSE separately programmable · Intermediate position OPEN and CLOSE separately programmable · Door travel speed OPEN and CLOSE separately programmable · Soft run position OPEN and CLOSE separately programmable · Soft run speed OPEN and CLOSE separately programmable · Door frame function (suppression of photocells in the door-frame) · Programmable impulse input and output · Servicing counter (interval programmable) and door cycle counter · Fault messages with memory · Multistage reset function (control unit, safety, remote etc.) · Connection (conventional) for push button, photocell and hold circuit · Connection (MS-Bus) for expansion boards · Connection (MS-Bus) for hand programming device and expansion modules · Connection for battery backup · Output 24 V DC, max. 50 mA

APPLICATION
<ul style="list-style-type: none"> · Opener system for garage doors - private use · For up-and-over doors up to a door width of 6,000 mm and a door weight of 200 kg · For single-walled sectional doors up to a door width of 6,000 mm and a door weight of 200 kg · For double-walled sectional doors up to a door width of 6,000 mm and a door weight of 200 kg · For retractable up-and-over doors and canopy doors up to a door width of 6,000 mm, a door height of 2,250 mm and a door weight of 200 kg · In combination with Marantec opener rails



Operator systems for sectional doors

GIGAsedo automatic controller for GIGAcontrol A

Emergency hand chain (C)



GIGAsedo 024.100 CXETO
9030V000

24 min⁻¹/100 Nm/0.37 kW/Ø 25.4 mm
Endless emergency hand chain 7 m; without controller; including 2 keys; torque bracket; pull rope and handle

GIGAsedo 018.140 CXETO
9033V000

18 min⁻¹/140 Nm/0.55 kW/Ø 31.75 mm
Endless emergency hand chain 7 m; without controller; including 2 keys; torque bracket; pull rope and handle

GIGAsedo 018.140 CXET1
9094V000

18 min⁻¹/140 Nm/0.55 kW/Ø 25.4 mm
Endless emergency hand chain 7 m; without controller; including 2 keys; torque bracket; pull rope and handle

Emergency release (D)



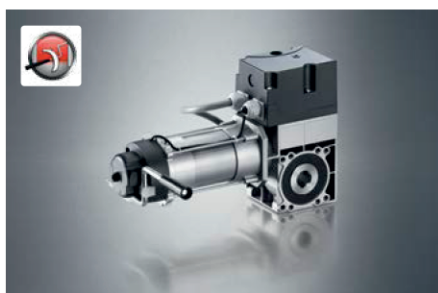
GIGAsedo 024.100 DXETO
9032V000

24 min⁻¹/100 Nm/0.37 kW/Ø 25.4 mm
Emergency release; without controller; including 2 keys; torque bracket; pull rope and handle

GIGAsedo 018.140 DXETO
9035V000

18 min⁻¹/140 Nm/0.55 kW/Ø 31.75 mm
Emergency release; without controller; including 2 keys; torque bracket; pull rope and handle

Emergency hand crank (H)



GIGAsedo 024.100 HXETO
9031V000

24 min⁻¹/100 Nm/0.37 kW/Ø 25.4 mm
Emergency hand crank; without controller; including 2 keys; torque bracket

GIGAsedo 018.140 HXETO
9034V000

18 min⁻¹/140 Nm/0.55 kW/Ø 31.75 mm
Emergency hand crank; without controller; including 2 keys; torque bracket

Emergency hand chain (C) with service release (M)



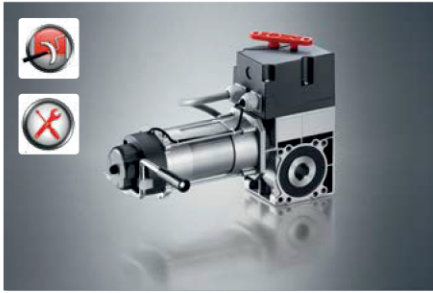
GIGAsedo 024.100 CMETO
9072V000

24 min⁻¹/100 Nm/0.37 kW/Ø 25.4 mm
Endless emergency hand chain 7 m; service release; without controller; including 2 keys; torque bracket; pull rope and handle

GIGAsedo 018.140 CMETO
9089V000

18 min⁻¹/140 Nm/0.55 kW/Ø 31.75 mm
Endless emergency hand chain 7 m; service release; without controller; including 2 keys; torque bracket; pull rope and handle

Emergency hand crank (H) with service release (M)



GIGAsedo 024.100 HMETO
9084V000

24 min⁻¹/100 Nm/0.37 kW/Ø 25.4 mm
Emergency hand crank; service release;
without controller; including 2 keys;
torque bracket

GIGAsedo 018.140 HMETO
9090V000

18 min⁻¹/140 Nm/0.55 kW/Ø 31.75 mm
Emergency hand crank; service release;
without controller; including 2 keys;
torque bracket

Required accessories



GIGAcontrol A R3
783V000

- automatic controller with 3 relays and second shut-off path

GIGAcontrol A R3
S10272-00001

- automatic controller with 3 relays and second shut-off path
- for capacator operator

GIGAcontrol A R3 IP65
783V650



- automatic controller with 3 relays and second shut-off path
- IP65



Mains connection cable 400 V
20896V000

- length: 1.3 m; 5 × 1.5 mm²
- with 5-pin CEE plug
- for three-phase operator



Connecting cable between
motor and controller

20967V000
20967V001
20967V002
20967V003

- 10-wire; pluggable

Length: 5 m
Length: 7 m
Length: 11 m
Length: 15 m

Connecting cable between
motor and IP65 controller



20967V650
20967V651
20967V652
20967V653

- 10-wire; pluggable
- IP65
- for IP65 controller

Length: 5 m
Length: 7 m
Length: 11 m
Length: 15 m

Technical data

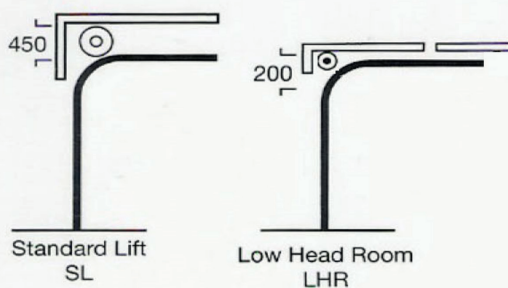
GIGAsedo automatic controller for GIGAcontrol A

GIGAsedo	024.100	018.140
Output torque	100 Nm	140 Nm
Static holding torque	450 Nm	600 Nm
Output speed	24 min ⁻¹	18 min ⁻¹
Motor performance	0.37 kW	0.55 kW
Operating voltage	3~230/400 V	3~230/400 V
Frequency	50 Hz	50 Hz
Rated current	2.6/1.5 A	3.45/2.0 A
Motor duty cycle DC	60 %	60 %
Limit switch range	14	14
IP code	IP54/IP65*	IP54/IP65*
Insulation class	F	F
Control voltage	24V	24V
Temperature range**	-5°C to +60°C	-5°C to +60°C
Continuous sound pressure level	< 70 dB(A)	< 70 dB(A)
Hollow shaft	25.4 mm	31.75 mm
Supplied fuse	10 A slow-blow	10 A slow-blow
Supplied feed	5 × 1.5 mm ²	5 × 1.5 mm ²
Weight (approx.)	13 kg	14 kg

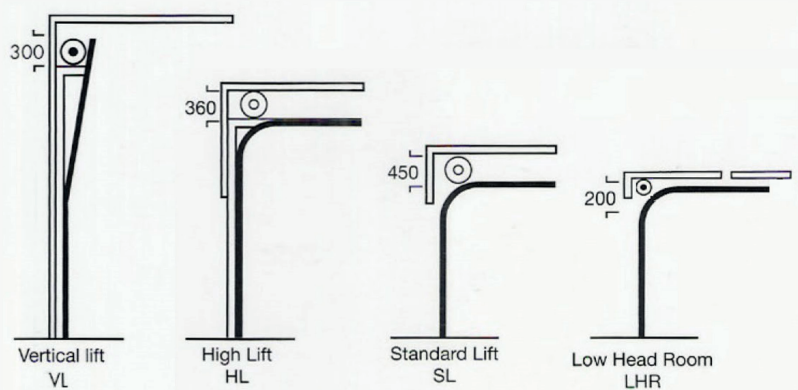
*optional ** < -5° for inquiries with electric heating

TRACK APPLICATIONS

A) RESIDENTIAL FULL VISION GARAGE DOOR



B) INDUSTRIAL FULL VISION SECTIONAL OVERHEAD DOOR





OZONE ME AUTOMATIC DOORS TRADING CO. L.L.C
P.O.BOX. 91336, DUBAI, UAE T. +971 4 228 1621 | E. INFO@OZONEDXB.COM
W. WWW.OZONEDXB.COM